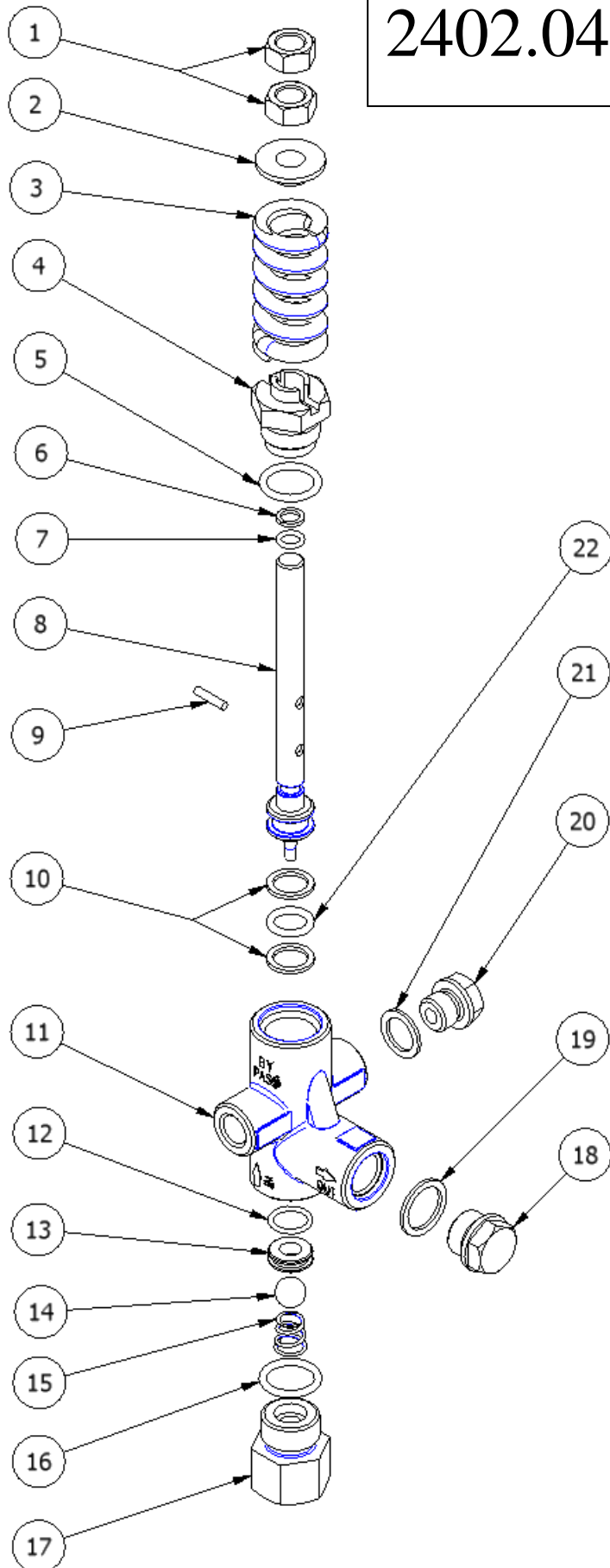


2402.04 VS 0÷220 BAR



SPARE PARTS KIT

KIT RICAMBI

Codice Code	Descrizione/Description		Q.tà
	#	Componente / Parts	Q.ty
2615.02		Kit guarnizioni asta / Kit stem seals	1
	5	0601.19	1
	6	0009.00	1
	7	0601.20	1
	9	1505.05	1
	10	0009.01	2
	22	0601.21	1
2615.03		Kit Entrata / Kit Inlet	1
	5	0601.19	1
	12	0601.41	1
	13	1503.16	1
	14	1504.07	1
	15	0900.11	1

SPARE PARTS

LISTA RICAMBI

Pos.	Q.TA' Q.TY	CODICE	DESCRIZIONE	DESCRIPTION
1	2	0302.08	DADO M10 UNI 5589	NUT M.10
2	1	1202.04	PIATTELLO MOLLA	SPRING PLATE
3	1	0900.24	MOLLA	VALVE SPRING
4	1	1407.12	RACCORDO ASTA	NUT, VALVE STEM GUIDE
5	1	0601.19	O-RING 3068 Ø2.62x17.13	O-RING 3068 Ø2.62x17.13
6	1	0009.00	ANELLO ANTIESTRUSIONE OR106	TEFLON BACKRING OR106
7	1	0601.20	O-RING 106 Ø1.78x6.75	O-RING 106 Ø1.78x6.75
8	1	1206.06	ASTA	STEM
9	1	1505.05	SPINA ELASTICA 3x14 UNI 6873	PIN
10	2	0009.01	ANELLO ANTIESTRUSIONE OR115	TEFLON BACKRING OR115
11	1	0204.24	CORPO VALVOLA	VALVE BODY
12	1	0601.41	O-RING 2050 Ø1.78x12.42	O-RING 2050 Ø1.78x12.42
13	1	1503.16	SEDE Ø8	VALVE SEAT DIA. 8 mm
14	1	1504.07	SFERA 7/16" AISI316	BALL DIA. 7/16" AISI316
15	1	0900.11	MOLLA CONICA	BALL SPRING
16	1	0601.19	O-RING 3068 Ø2.62x17.13	O-RING 3068 Ø2.62x17.13
17	1	1407.13	RACCORDO VALVOLA	INLET FITTING
18	1	1601.17	TAPPO OTTONE G 3/8	BRASS PLUG G 3/8
19	1	0603.06	ROSETTA RAME G 3/8	COPPER WASHER G 3/8
20	1	1601.21	TAPPO OTTONE G 1/4	BRASS PLUG G 1/4
21	1	0603.08	ROSETTA RAME G 1/4	COPPER WASHER G 1/4
22	1	0601.21	O-RING 115 Ø2.62x11.91	O-RING 115 Ø2.62x11.91