

# TECA

## Series Aluminium Housing Three-Phase Multi-Mount Asynchronous Motor

TECA series Aluminum Housing 3 Phase Multi-mount motors up to 200 frame, utilising new automated production technology. The motors are manufactured to IEC Standard

Motors are :Easily maintained,light weight with high performance and low noise levels. The multi-mount design offers both O.E.M and stockist greater flexibility where terminal box position is important.



### TECA Series **IE1** Efficiency Motors Technical Data (at 50Hz)

Model	Power (KW)	Current (A)			Current (A)			Current (A)			Speed (r/min)	Eff. (%)	Power Factor (CosΦ)	T <sub>st</sub> /T <sub>n</sub> (Times)	T <sub>max</sub> /T <sub>n</sub> (Times)	T <sub>min</sub> /T <sub>n</sub> (Times)	I <sub>st</sub> /I <sub>n</sub> (Times)	Noise dB(A)	W.T (Kg)
		220V	380V	660V	230V	400V	690V	240V	415V	720V									
TECA 561-2	0.09	0.66	0.38	0.22	0.62	0.36	0.21	0.60	0.35	0.20	2710	53	0.72	2.2	2.3	2	4	58	2.60
TECA 562-2	0.12	0.73	0.42	0.24	0.69	0.40	0.23	0.67	0.39	0.22	2700	61	0.72	2.2	2.3	2	4	58	3.00
TECA 563-2	0.18	1.00	0.58	0.33	0.95	0.55	0.32	0.92	0.53	0.31	2710	63	0.75	2.2	2.4	1.6	6	61	4.00
TECA 631-2	0.18	1.00	0.58	0.33	0.95	0.55	0.32	0.92	0.53	0.31	2710	63	0.75	2.2	2.4	1.6	6	61	4.00
TECA 632-2	0.25	1.29	0.75	0.43	1.23	0.71	0.41	1.19	0.69	0.40	2710	65	0.78	2.2	2.4	1.6	6	61	4.20
TECA 633-2	0.37	1.92	1.11	0.64	1.82	1.05	0.61	1.76	1.02	0.59	2710	65	0.78	2.2	2.4	1.6	6	62	4.70
TECA 711-2	0.37	1.76	1.02	0.59	1.67	0.97	0.56	1.61	0.93	0.54	2730	70	0.79	2.2	2.4	1.6	6	64	5.20
TECA 712-2	0.55	2.57	1.49	0.86	2.45	1.42	0.82	2.36	1.36	0.79	2760	71	0.79	2.2	2.4	1.6	6	64	6.00
TECA 713-2	0.75	3.33	1.93	1.11	3.18	1.83	1.06	3.06	1.77	1.02	2730	72	0.82	2.2	2.4	1.5	6	65	7.00
TECA 801-2	0.75	3.21	1.86	1.07	3.06	1.77	1.02	2.94	1.70	0.98	2770	73	0.84	2.2	2.4	1.5	6	67	8.70
TECA 802-2	1.1	4.56	2.64	1.52	4.35	2.51	1.45	4.18	2.42	1.39	2770	76.2	0.83	2.2	2.4	1.5	6	67	10.00
TECA 803-2	1.5	6.04	3.50	2.01	5.87	3.32	1.92	5.54	3.20	1.85	2800	78.5	0.83	2.2	2.4	1.5	6	70	11.20
TECA 90S-2	1.5	5.97	3.46	1.99	5.76	3.28	1.90	5.47	3.16	1.82	2840	78.5	0.84	2.2	2.4	1.5	6	72	12.00
TECA 90L1-2	2.2	8.39	4.85	2.80	8.0	4.61	2.66	7.69	4.45	2.56	2840	81	0.85	2.2	2.4	1.4	6	72	14.50
TECA 90L2-2	3	11.1	6.42	3.69	10.6	6.10	3.52	10.2	5.88	3.39	2840	82.6	0.86	2.2	2.4	1.4	6	74	15.00

## TECA Series IE1 Efficiency Motors Technical Data (at 50Hz)

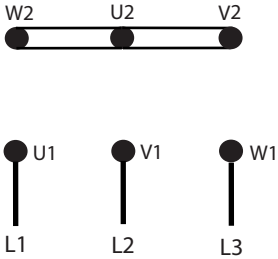
Model	Power (KW)	Current (A)			Current (A)			Current (A)			Speed (r/min)	Eff. (%)	Power Factor (CosΦ)	T <sub>st</sub> /T <sub>n</sub> (Times)	T <sub>max</sub> /T <sub>n</sub> (Times)	T <sub>min</sub> /T <sub>n</sub> (Times)	I <sub>st</sub> /I <sub>n</sub> (Times)	Noise dB(A)	W.T (Kg)
		220V	380V	660V	230V	400V	690V	240V	415V	720V									
TECA 100L1-2	3	11	6.34	3.65	10.4	6.03	3.48	10	5.81	3.35	2840	82.6	0.87	2.2	2.3	1.4	7	76	20
TECA 100L2-2	4	14.3	8.3	4.78	13.7	7.88	4.55	13.1	7.6	4.38	2850	84.2	0.87	2.2	2.3	1.4	7.5	77	24
TECA 112M-2	4	14.3	8.3	4.78	13.7	7.88	4.55	13.1	7.6	4.38	2880	84.2	0.87	2.2	2.3	1.4	7.5	77	26
TECA 112L-2	5.5	19.1	11.1	6.38	18.2	10.5	6.08	17.5	10.1	5.85	2880	85.7	0.88	2.2	2.3	1.2	7.5	78	29.3
TECA 132S1-2	5.5	19.1	11.1	6.38	18.2	10.5	6.08	17.5	10.1	5.85	2900	85.7	0.88	2	2.2	1.2	7.5	80	38.4
TECA 132S2-2	7.5	25.7	14.9	8.57	24.5	14.1	8.16	23.6	13.6	7.86	2920	87	0.88	2	2.2	1.2	7.5	80	41.3
TECA 132M1-2	9.2	30.8	17.8	10.3	29.9	17.3	9.96	28.3	16.3	9.42	2930	88	0.89	2	2.2	1.2	7.5	81	48.2
TECA 132M2-2	11	36.3	21	12.1	34.6	20	11.5	33.3	19.2	11.1	2930	88.4	0.9	2	2.2	1.2	7.5	83	52.5
TECA 160M1-2	11	36.3	21	12.1	34.6	20	11.5	33.3	19.2	11.1	2940	88.4	0.9	2	2.2	1.2	7.5	86	76
TECA 160M2-2	15	48.4	28	16.1	46.1	26.6	15.4	44.4	25.7	14.8	2940	89.4	0.91	2	2.2	1.2	7.5	86	77.5
TECA 160L-2	18.5	59.3	34.3	19.8	56.5	32.6	18.8	54.3	31.4	18.1	2940	90	0.91	2	2.2	1.1	7.5	86	92
TECA 180M-2	22	71.3	41.3	23.8	68.2	39.2	22.6	65.3	37.8	21.8	2950	90	0.9	2	2.2	1.2	7.5	91	121
TECA 200L1-2	30	96	55.6	32.1	91.8	52.8	30.5	88	50.9	29.4	2950	91.2	0.9	2	2.2	1.2	7.5	94	144
TECA 200L2-2	37	117	67.9	39.2	112	64.5	37.2	108	62.2	35.9	2940	92	0.9	2	2.2	1.2	7.5	94	151
TECA 561-4	0.06	0.64	0.37	0.21	0.61	0.35	0.2	0.58	0.34	0.19	1360	50	0.56	2.3	2.4	2	4	50	2.9
TECA 562-4	0.09	0.82	0.47	0.27	0.78	0.45	0.26	0.75	0.43	0.25	1360	52	0.59	2.3	2.4	2	4	50	3.20
TECA 631-4	0.12	1	0.58	0.33	0.95	0.55	0.32	0.92	0.53	0.31	1360	52	0.64	2.2	2.4	2	4	52	3.7
TECA 632-4	0.18	1.28	0.74	0.43	1.21	0.7	0.4	1.17	0.67	0.39	1310	57	0.65	2.2	2.4	2	4	52	4.2
TECA 633-4	0.25	1.66	0.96	0.55	1.58	0.91	0.53	1.52	0.88	0.51	1340	60	0.66	2.2	2.2	2	4	54	5
TECA 711-4	0.25	1.52	0.88	0.51	1.45	0.84	0.48	1.39	0.81	0.46	1350	60	0.72	2.2	2.4	1.7	6	55	5
TECA 712-4	0.37	2.02	1.17	0.67	1.92	1.11	0.64	1.85	1.07	0.62	1370	65	0.74	2.2	2.4	1.7	6	55	5.8
TECA 713-4	0.55	2.92	1.69	0.97	2.78	1.6	0.93	2.67	1.55	0.89	1380	66	0.75	2.2	2.4	1.7	6	57	6.5
TECA 801-4	0.55	2.87	1.66	0.96	2.74	1.58	0.91	2.63	1.52	0.88	1370	67	0.75	2.2	2.4	1.7	6	58	8.1
TECA 802-4	0.75	3.5	2.03	1.17	3.34	1.93	1.11	3.21	1.86	1.07	1380	72	0.78	2.2	2.4	1.6	6	58	9.1
TECA 803-4	1.1	4.86	2.81	1.62	4.63	2.67	1.54	4.45	2.57	1.48	1390	76.2	0.78	2.2	2.4	1.6	6	60	11
TECA 90S-4	1.1	4.8	2.78	1.6	4.57	2.64	1.52	4.4	2.54	1.47	1400	76.2	0.79	2.2	2.4	1.6	6	61	11.7
TECA 90L1-4	1.5	6.27	3.63	2.09	5.97	3.45	1.99	5.75	3.32	1.92	1400	78.5	0.8	2.2	2.4	1.6	6	61	14.4
TECA 90L2-4	2.2	8.91	5.16	2.97	8.45	4.9	2.83	8.17	4.72	2.72	1400	81	0.8	2.2	2.4	1.5	7	63	17.6
TECA 100L1-4	2.2	8.8	5.09	2.93	8.38	4.84	2.79	8.07	4.66	2.69	1420	81	0.81	2.2	2.3	1.5	7	64	19.2
TECA 100L2-4	3	11.8	6.81	3.92	11.2	6.47	3.74	10.8	6.24	3.6	1420	82.6	0.81	2.2	2.3	1.5	7	64	22.5
TECA 100L3-4	4	15.2	8.8	5.07	14.2	8.36	4.83	13.9	8.06	4.65	1430	84.2	0.82	2.2	2.3	1.5	7	65	27.3
TECA 112M-4	4	15	8.7	5.01	14.3	8.26	4.77	13.8	7.96	4.59	1430	84.2	0.83	2.2	2.2	1.5	7	65	29
TECA 112L-4	5.5	20.3	11.7	6.76	19.3	11.2	6.44	18.6	10.8	6.2	1440	85.7	0.83	2.2	2.2	1.4	7	68	35.7
TECA 132S-4	5.5	20.1	11.6	6.68	19.1	11	6.37	18.4	10.6	6.13	1450	85.7	0.84	2.2	2.2	1.4	7	71	39
TECA 132M-4	7.5	26.6	15.4	8.87	25.4	14.6	8.45	24.4	14.1	8.13	1450	87	0.85	2.2	2.2	1.4	7	71	48.6
TECA 132L1-4	9.2	32.5	18.8	10.8	30.9	17.9	10.3	29.8	17.2	9.9	1460	87.5	0.85	2.2	2.2	1.4	7.5	74	56.5
TECA 132L2-4	11	38	22	12.7	36.2	20.9	12.1	34.8	20.1	11.6	1460	88.4	0.86	2.2	2.2	1.4	7.5	74	64

## TECA Series IE1 Efficiency Motors Technical Data (at 50Hz)

Model	Power (KW)	Current (A)			Current (A)			Current (A)			Speed (r/min)	Eff. (%)	Power Factor (CosΦ)	T <sub>st</sub> /T <sub>n</sub> (Times)	T <sub>max</sub> /T <sub>n</sub> (Times)	T <sub>min</sub> /T <sub>n</sub> (Times)	I <sub>st</sub> /I <sub>n</sub> (Times)	Noise dB(A)	W.T (Kg)
		220V	380V	660V	230V	400V	690V	240V	415V	720V									
TECA 160M-4	11	37.5	21.7	12.5	35.8	20.6	11.9	34.4	19.9	11.5	1460	88.4	0.87	2.2	2.2	1.4	7	75	73.00
TECA 160L1-4	15	51.2	29.6	17.1	48.8	28.2	16.3	46.9	27.1	15.6	1460	88.4	0.87	2.2	2.2	1.4	7.5	75	88.50
TECA 160L2-4	18.5	63.1	36.5	21.0	60.1	34.7	20.0	57.9	33.5	19.3	1460	90.5	0.85	2.2	2.2	1.4	7.5	78	97.50
TECA 180M-4	18.5	62.4	36.1	20.8	59.7	34.3	19.8	57.2	33.1	19.1	1460	90.5	0.86	2.2	2.2	1.4	7.5	80	118.0
TECA 180L-4	22	73.8	42.7	24.7	70.6	40.6	23.4	67.7	39.1	22.6	1460	91	0.86	2.2	2.2	1.4	7.5	80	128.0
TECA 200L-4	30	99.5	57.6	33.2	95.1	54.7	31.6	91.2	52.7	30.4	1470	92	0.86	2.2	2.2	1.4	7.5	83	158.0
TECA 631-6	0.09	0.92	0.53	0.31	0.88	0.51	0.29	0.85	0.49	0.28	840	42	0.61	2	2	1.5	3.5	50	4.20
TECA 632-6	0.12	1.13	0.65	0.38	1.08	0.62	0.36	1.03	0.60	0.34	850	45	0.62	2	2	1.5	3.5	50	4.50
TECA 711-6	0.18	1.28	0.74	0.43	1.22	0.70	0.41	1.17	0.68	0.39	880	56	0.66	1.6	1.7	1.5	4	52	5.60
TECA 712-6	0.25	1.59	0.92	0.53	1.51	0.87	0.50	1.46	0.84	0.49	900	59	0.7	2.1	2.2	1.5	4	52	6.00
TECA 713-6	0.37	2.31	1.34	0.77	2.2	1.27	0.73	2.11	1.22	0.70	890	61	0.69	2	2.1	1.5	4	54	6.80
TECA 801-6	0.37	2.24	1.30	0.75	2.13	1.23	0.71	2.05	1.19	0.68	900	62	0.7	1.9	1.9	1.5	4	56	8.10
TECA 802-6	0.55	2.99	1.73	1.00	2.85	1.65	0.95	2.74	1.59	0.91	900	67	0.72	2	2.3	1.5	4	56	9.60
TECA 803-6	0.75	4.02	2.33	1.34	3.83	2.21	1.28	3.69	2.13	1.23	900	68	0.72	2	2.3	1.5	4	58	10.00
TECA 90S-6	0.75	3.96	2.29	1.32	3.77	2.18	1.26	3.63	2.10	1.21	920	69	0.72	2.2	2.2	1.5	5.5	59	11.30
TECA 90L1-6	1.1	5.49	3.18	1.83	5.23	3.02	1.74	5.03	2.91	1.68	925	72	0.73	2.2	2.2	1.3	5.5	59	14.40
TECA 90L2-6	1.5	7.09	4.11	2.36	6.76	3.90	2.25	6.50	3.76	2.17	925	74	0.75	2.2	2.2	1.3	5.5	60	15.50
TECA 100L1-6	1.5	7.00	4.05	2.33	6.67	3.85	2.22	6.42	3.71	2.14	945	74	0.76	2.2	2.2	1.3	6	61	18.80
TECA 100L2-6	2.2	9.87	5.71	3.29	9.40	5.43	3.13	9.04	5.23	3.01	950	77	0.76	2.2	2.2	1.3	6	63	19.80
TECA 112M-6	2.2	9.7	5.64	3.25	9.28	5.36	3.09	8.93	5.16	2.98	955	78	0.76	2.2	2.2	1.3	6	64	25.00
TECA 112L-6	3	12.9	7.49	4.31	12.3	7.12	4.11	11.9	6.86	3.95	950	79	0.77	2.2	2.2	1.3	6	64	30.00
TECA 132S-6	3	13.1	7.59	4.37	12.5	7.21	4.16	12.0	6.95	4.01	960	79	0.76	2	2	1.3	6.5	64	35.00
TECA 132M1-6	4	17.2	9.93	5.72	16.4	9.44	5.45	15.7	9.10	5.24	960	80.5	0.76	2	2	1.3	6.5	68	47.60
TECA 132M2-6	5.5	22.6	13.1	7.53	21.5	12.4	7.17	20.7	12.0	6.9	960	83	0.77	2	2	1.3	6.5	68	50.70
TECA 132L-6	7.5	30.1	17.4	10.0	28.7	16.5	9.55	27.6	15.9	9.2	960	85	0.77	2	2	1.3	6.5	68	47.60
TECA 160M-6	7.5	28.6	16.6	9.5	27.3	15.7	9.08	26.2	15.2	8.7	960	86	0.8	2	2.2	1.3	6.5	68	70.0
TECA 160L-6	11	41.8	24.2	13.9	39.8	23.0	13.3	38.3	22.1	12.8	960	87.5	0.79	2	2.2	1.2	6.5	73	87.0
TECA 180L-6	15	54.6	31.6	18.2	52.2	30.0	17.3	50.1	28.9	16.7	970	89	0.81	2	2.2	1.3	6.5	79	122.0
TECA 200L1-6	18.5	66.6	38.6	22.2	63.7	36.6	21.1	61.0	35.3	20.3	975	90	0.81	2	2.2	1.3	6.5	82	136.0
TECA 200L2-6	22	77.3	44.7	25.8	73.9	42.5	24.5	70.8	41.0	23.6	975	90	0.83	2	2.2	1.3	6.5	82	152.0
TECA 711-8	0.09	0.88	0.51	0.29	0.84	0.48	0.28	0.81	0.47	0.27	680	48	0.56	1.5	1.7	1.3	3	50	5.60
TECA 712-8	0.12	1.05	0.61	0.35	1.00	0.58	0.33	0.96	0.55	0.32	690	51	0.59	1.6	1.7	1.3	2.7	50	6.00
TECA 801-8	0.18	1.52	0.88	0.51	1.45	0.84	0.48	1.39	0.80	0.46	680	51	0.61	1.5	1.7	1.3	2.8	52	9.40
TECA 802-8	0.25	1.92	1.11	0.64	1.83	1.06	0.61	1.76	1.02	0.59	680	56	0.61	1.6	2	1.3	2.7	52	10.10
TECA 90S-8	0.37	2.45	1.42	0.82	2.33	1.35	0.78	2.24	1.30	0.75	680	63	0.63	1.6	1.8	1.3	2.8	56	12.50
TECA 90L-8	0.55	3.36	1.95	1.12	3.21	1.85	1.07	3.08	1.78	1.03	680	66	0.65	1.6	1.8	1.3	3	56	15.30
TECA 100L1-8	0.75	4.45	2.58	1.48	4.24	2.45	1.41	4.08	2.36	1.36	710	66	0.67	1.7	2.1	1.3	3.5	59	17.20
TECA 100L2-8	1.1	5.81	3.36	1.94	5.54	3.20	1.85	5.33	3.08	1.78	710	72	0.69	1.7	2.1	1.2	3.5	59	19.50
TECA 112M-8	1.5	7.82	4.53	2.61	7.45	4.30	2.48	7.17	4.15	2.39	710	74	0.68	1.8	2.1	1.2	4.2	61	25.50
TECA 132S-8	2.2	10.8	6.28	3.61	10.3	5.96	3.44	9.94	5.75	3.31	720	75	0.71	2	2	1.2	5.5	64	34.20
TECA 132M-8	3	14.0	8.11	4.67	13.3	7.70	4.45	12.8	7.43	4.28	720	77	0.73	2	2	1.2	5.5	64	40.00
TECA 160M1-8	4	18.0	10.4	5.99	17.1	9.89	5.71	16.5	9.53	5.49	730	80	0.73	1.9	2.1	1.2	6	68	59.00
TECA 160M2-8	5.5	23.4	13.5	7.79	22.3	12.9	7.42	21.4	12.4	7.14	720	83.5	0.74	2	2.2	1.2	6	68	69.00
TECA 160L-8	7.5	30.9	17.9	10.3	29.4	17.0	9.8	28.3	16.4	9.43	720	85	0.75	1.9	2.2	1.2	6	68	87.00
TECA 180L-8	11	45.2	26.2	15.1	43.6	25.1	14.5	41.5	24.0	13.8	715	87.4	0.73	1.9	2.2	1.2	6	78	125.0
TECA 200L-8	15	58.9	34.1	19.6	56.3	32.4	18.7	54.0	31.2	18.0	725	88.0	0.76	1.9	2.2	1.2	6	80	151.0

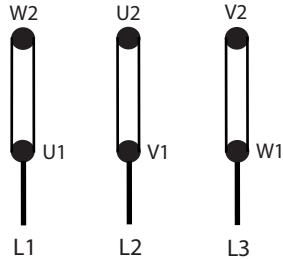
**MS Three Phase Motors**

Star Connection 



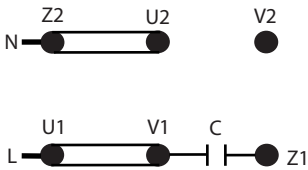
Connect links as shown below


Delta Connection 

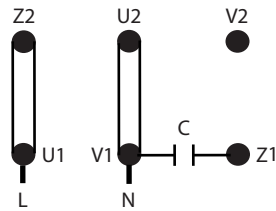


**MY Single Phase - Perm Cap**

Clockwise Rotation 

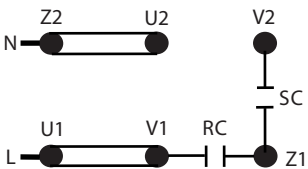


Anti Clockwise Rotation 



**ML Single Phase - Cap Start / Cap Run**

Clockwise Rotation 



Anti Clockwise Rotation 

